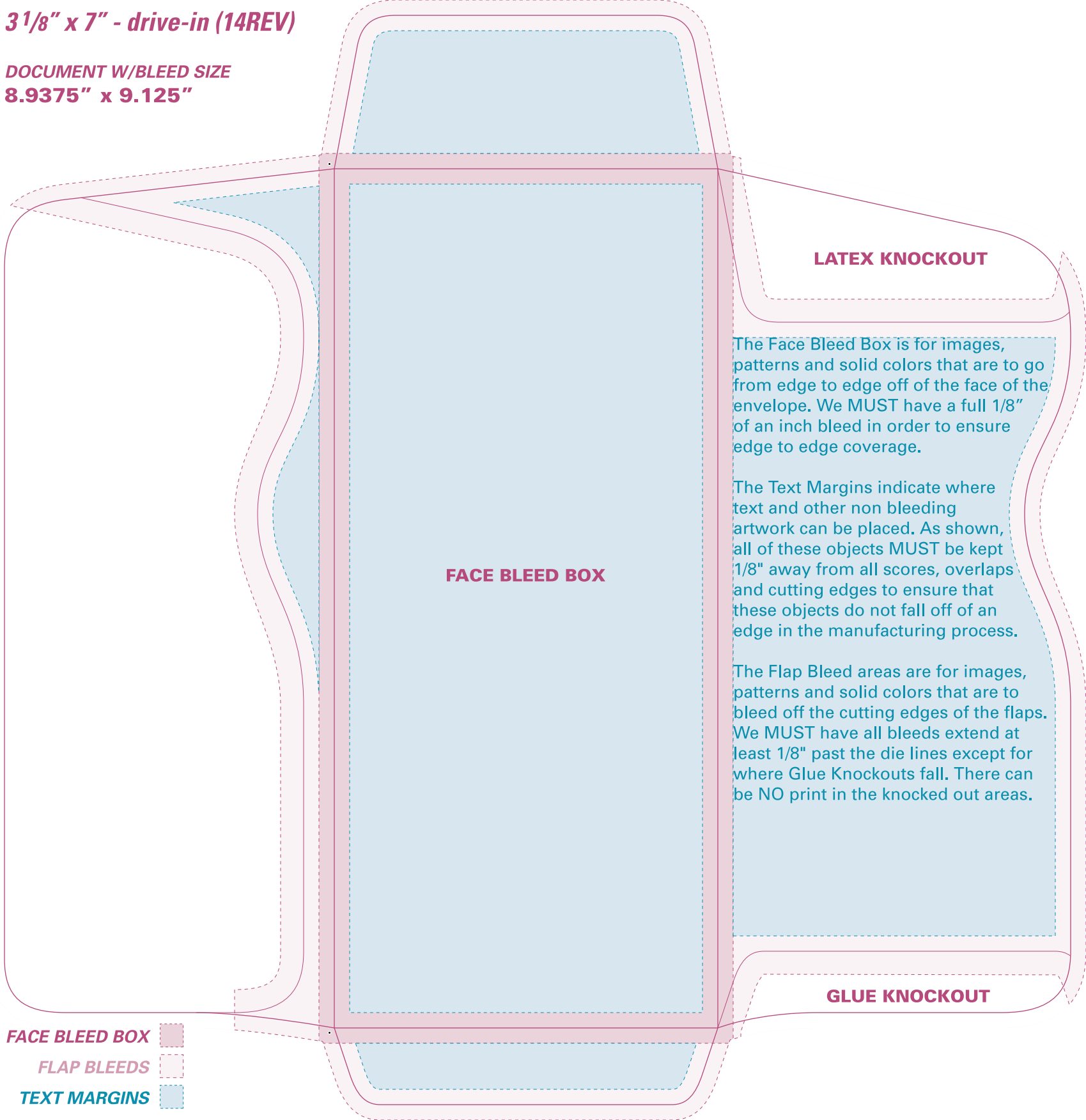


# 3 1/8" x 7" - drive-in (14REV)

DOCUMENT W/BLEED SIZE

8.9375" x 9.125"



## LATEX KNOCKOUT

The Face Bleed Box is for images, patterns and solid colors that are to go from edge to edge off of the face of the envelope. We MUST have a full 1/8" of an inch bleed in order to ensure edge to edge coverage.

The Text Margins indicate where text and other non bleeding artwork can be placed. As shown, all of these objects MUST be kept 1/8" away from all scores, overlaps and cutting edges to ensure that these objects do not fall off of an edge in the manufacturing process.

The Flap Bleed areas are for images, patterns and solid colors that are to bleed off the cutting edges of the flaps. We MUST have all bleeds extend at least 1/8" past the die lines except for where Glue Knockouts fall. There can be NO print in the knocked out areas.

## FACE BLEED BOX

## GLUE KNOCKOUT

FACE BLEED BOX



FLAP BLEEDS



TEXT MARGINS

